

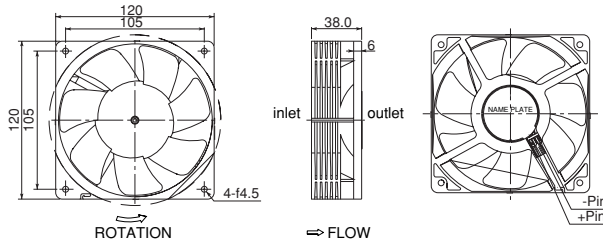
一般仕様 General Specifications

- ◇ 許容環境温度範囲： -10℃～+70℃ (65%RH) (Operating)  
-40℃～+75℃ (65%RH) (Storage)  
実用上さしつかえない状態で結露無きこと
- ◇ Allowable Ambient Temperature Range :  
-10℃～+70℃ (65%RH) (Operating)  
-40℃～+75℃ (65%RH) (Storage)  
No such condensation as hinders practical use

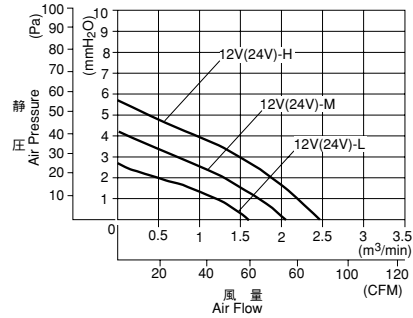
期待できる寿命  
Expected Life

- ※故障率 10%  
30,000 時間 (25℃, 65%RH)  
10,000 時間 (70℃, 65%RH)
- ※ Failure rate 10%  
30,000 hours (25℃, 65%RH)  
10,000 hours (70℃, 65%RH)

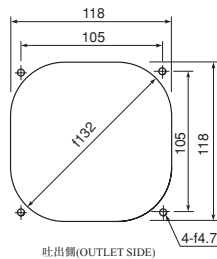
外觀図 Outline



特性曲線 Characteristic Curves



取付穴参考寸法 Panel Out-cuts



材質 Material

- ◇軸受 : ハイドロウェーブベアリング
- ◇ Bearing : Hydro Wave Bearing

仕様 Specifications

型式 Model	定格電圧 Rated Voltage	使用電圧範囲 Operating Voltage	定格電流 Current	定格入力 Input Power	定格回転速度 Rated Speed	騒音 Noise
	(V)	(V)	(mA)*1	(W)*1	(min <sup>-1</sup> )*1	(dB-A)*1
FBL12G12L	12	7~13.8	170	2.04	1700	30.0
FBL12G12M			280	3.36	2100	35.5
FBL12G12H			370	4.44	2500	41.5
FBL12G24L	24	14~27.6	96	2.30	1700	30.0
FBL12G24M			124	2.98	2100	35.5
FBL12G24H			200	4.80	2500	41.5

回転方向：ラベルから見て時計方向  
風吹き出し方向：ラベル側

Rotation: Clockwise as seen from the label side.  
Airflow Outlet: Label side

\*1: Average Values in Free Air