

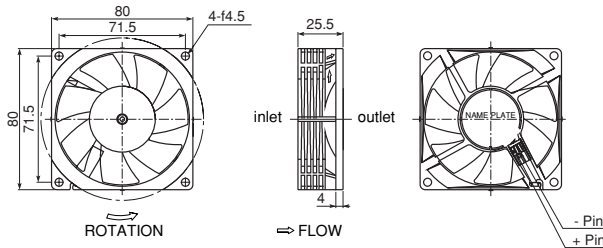
一般仕様 General Specifications

- ◇許容環境温度範囲：-10℃ to +70℃ (65%RH) (Operating)
-40℃ to +75℃ (65%RH) (Storage)
実用上さしつかえない状態で結露無きこと
- ◇ Allowable Ambient Temperature Range :
-10℃ to +70℃ (65%RH) (Operating)
-40℃ to +75℃ (65%RH) (Storage)
No such condensation as hinders practical use

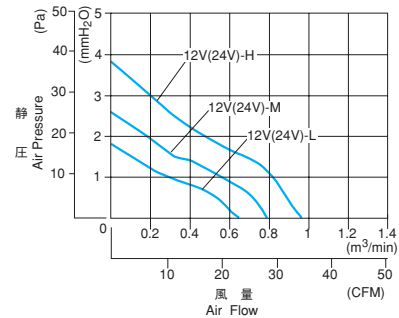
期待できる寿命
Expected Life

- ※故障率 10%
50,000 時間 (40℃, 65%RH)
- ※ Failure rate 10%
50,000 hours (40℃, 65%RH)

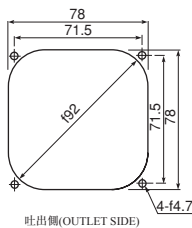
外觀図 Outline



特性曲線 Characteristic Curves



取付穴参考寸法 Panel Out-cuts



材質 Material

- ◇軸受 : ハイドロウェーブベアリング
- ◇ Bearing : Hydro Wave Bearing

仕様 Specifications

型式 Model	定格電圧 Rated Voltage	使用電圧範囲 Operating Voltage	定格電流 Current	定格入力 Input Power	定格回転速度 Rated Speed	騒音 Noise
	(V)	(V)	(mA)*1	(W)*1	(min ⁻¹)*1	(dB-A)*1
FBL08A12L	12	7 to 13.8	68	0.82	1900	24.0
FBL08A12M			124	1.49	2450	28.0
FBL08A12H			173	2.08	2950	32.0
FBL08A24L	24	14 to 27.6	54	1.30	1900	21.0
FBL08A24M			71	1.70	2450	28.0
FBL08A24H			105	2.52	2950	32.0

回転方向：ラベルから見て時計方向
風吹き出し方向：ラベル側

Rotation: Clockwise as seen from the label side.
Airflow Outlet: Label side

*1: Average Values in Free Air